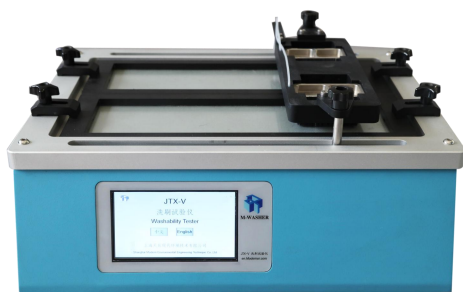


WASHABILITY TESTER

The Modern Instrument's Digital Washability Tester simulates wear and use according to international standards and customer defined methods and has an impressive range of applications including: assessing wear of coatings, paints, ceramics, printed cleaning products These tests are invaluable in formulating, testing and approving coatings for use in specific applications. Coatings are rated and classified according to the results of these tests allowing users to differentiate their products.

Standards



The JTX-V Digital multifunctional Washability Tester is designed according to the following standards:

ASTM D2486, ASTM D3450, DIN 53778,
ISO 11998, BS 3900

Technical Specification

Type	JTX-V		
Brush	38×90mm	Weight of brush (including brush holders)	450±5g
Grinding Head (with weight)	1500g	Reciprocating travel	200/250/300mm One-way option
Peristaltic Pump Wording Mode	Manual /Automation	Frequency of Travel	20/25/30/35/37 times/minute option
Panel Dimension	430×150mm	Peristaltic pump flow	0.1-20ml/min
Power	210W	Reciprocating frequency	20/25/30/35/37(min)
Main engine weight	41KG	Use power supply	85-264AC 50/60Hz
Gross weight	57KG	Outline size	570×440×350mm

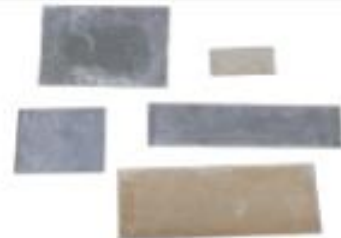
Related accessories and consumables



XD-567
Black plastic panel



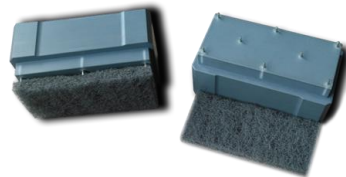
XD-610
Hog Brush (1 pair)



XD-493/494/495/496/497/848/849
Non - asbestos cement board



XD-3012
Scrubbing instrument-stain-resistant accessories



XD-3011 (ISO 11998)
Scrubber-Wet
Scrubbing Accessories



XD-3013(ASTM D3450)
Scrubber-Wet
Scrubbing Accessories