



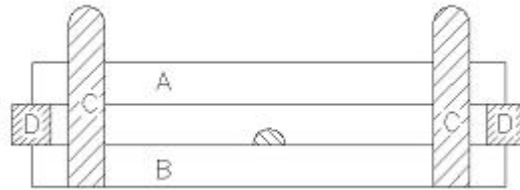
PN-II Parallel Plate Viscometer



I . Introduction:

PN-II Parallel Plate Viscometer is also called (Spreadometer).

Its principle is ink flow between two parallel plates, flow situation can be measured fast and precisely at a low shear stress. (select spreading diameter at 1 min. as flowability of this ink in some countries).



Structural principle see sketch:

Put certain quantity of ink on the plate, after removing D, upper transparent (glass or plastic) plate A falls down along C pole, press upon ink. After ink dropped and pressed, it will start to spread out. Measure spreading diameter of ink under different time until reaching maximum diameter. It can measure four parameters of ink using Parallel Plate Viscometer, that is, viscosity, yield stress, intercept and slope.

Note: Upper plate should be 1.5mm higher than ink way.

II. Ordering Information:

Type	Name
PN-II	Parallel Plate Viscometer